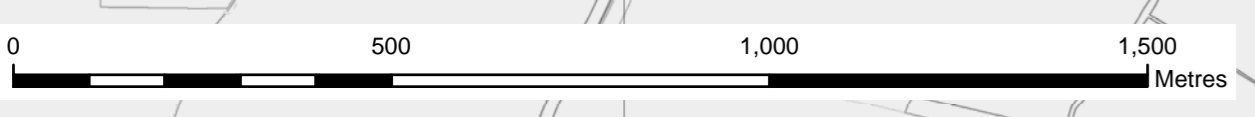
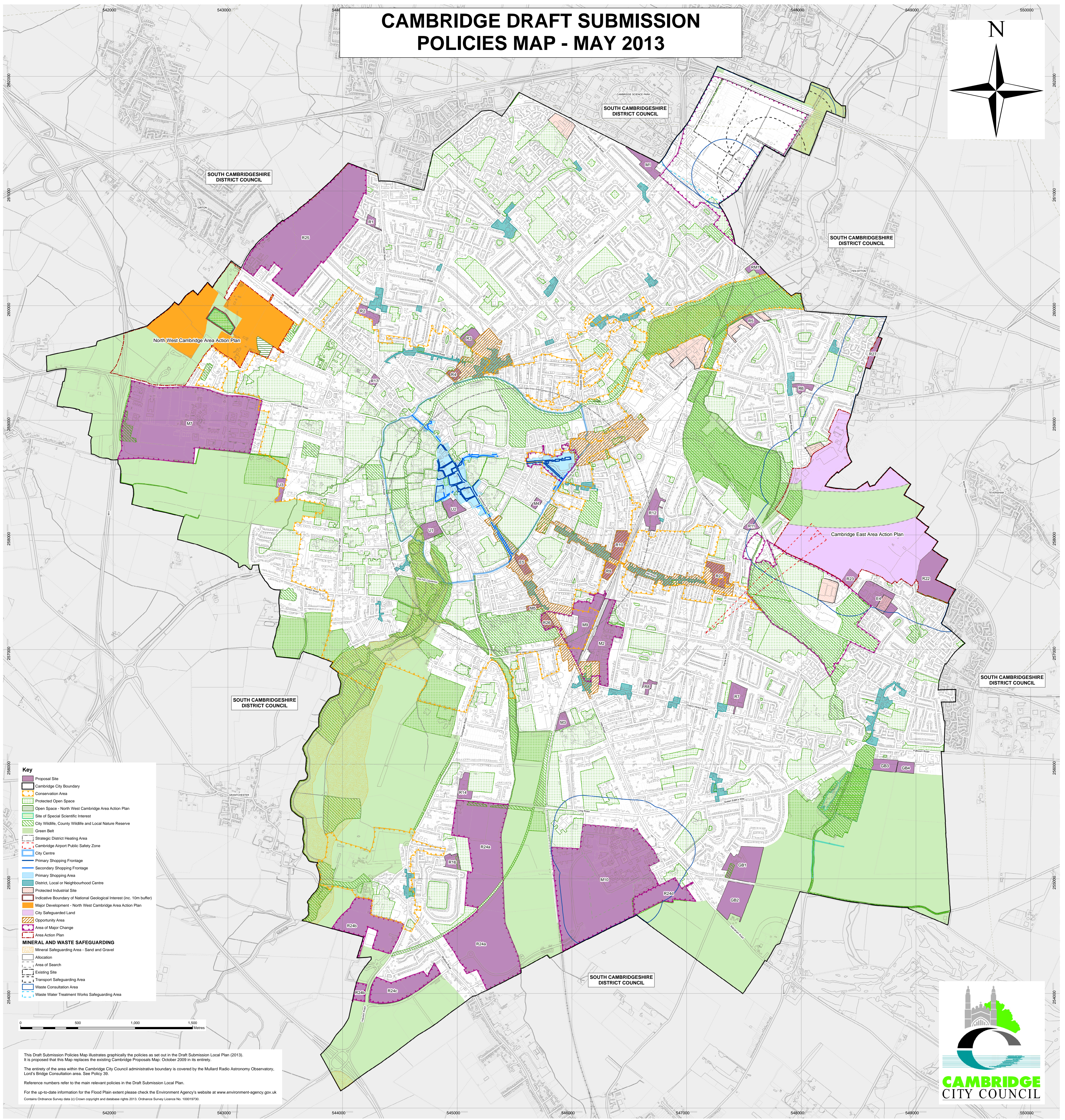
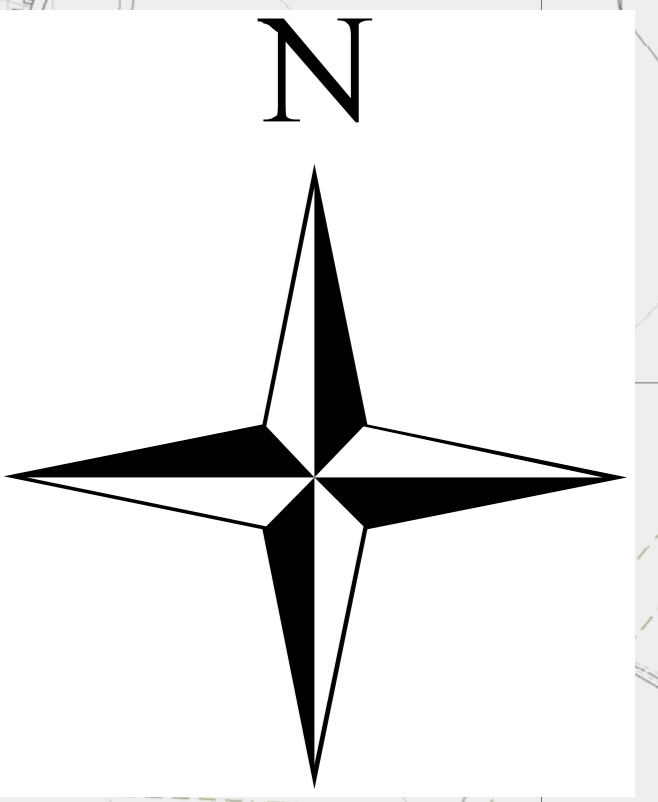


CAMBRIDGE DRAFT SUBMISSION POLICIES MAP - MAY 2013



This Draft Submission Policies Map illustrates graphically the policies as set out in the Draft Submission Local Plan (2013). It is proposed that this Map replaces the existing Cambridge Proposals Map: October 2009 in its entirety.

The entirety of the area within the Cambridge City Council administrative boundary is covered by the Mullard Radio Astronomy Observatory, Lord's Bridge Consultation area. See Policy 39.

Reference numbers refer to the main relevant policies in the Draft Submission Local Plan.

For the up-to-date information for the Flood Plain extent please check the Environment Agency's website at www.environment-agency.gov.uk

Contains Ordnance Survey data (c) Crown copyright and database rights 2013. Ordnance Survey Licence No. 100019730.

